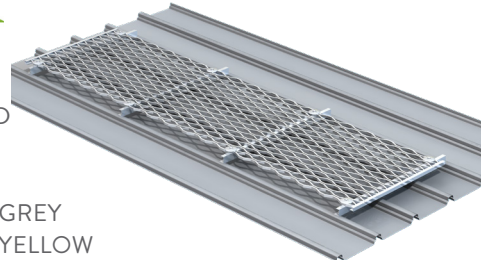


# WALKWAYS

**pace**600.

**ON-TRAK**



- GW8: PACE600 ALUMINUM WALKWAY ONLY
- GW9: PACE600 ALUMINUM WALKWAY, LEVELED
- GW10: ON-TRAK FIBRE WALKWAY, GREY
- GW11: ON-TRAK FIBRE WALKWAY, YELLOW
- GW12: ON-TRAK FIBRE WALKWAY ON BATTENS, GREY
- GW13: ON-TRAK FIBRE WALKWAY ON BATTENS, YELLOW

Sayfa Group certifies that the specified walkways are designed, manufactured and tested in accordance with the following standards:

AS 1657:2018

FIXED PLATFORMS, WALKWAYS, STAIRWAYS AND LADDERS, DESIGN, CONSTRUCTION AND INSTALLATION



**DISCLAIMER**

All product specifications and technical descriptions, recommendations and other information provided, are given as general guidance and advice, and are to be read in conjunction with Sayfa Group installation instructions and any other data available and applicable to each particular standard product or system. Use of such data is however the user's sole responsibility, taking into account the intended application and actual conditions existing on the particular worksite. Consequent selection of the right product for any particular use, remains the user's ultimate responsibility. Sayfa Group is therefore not obligated or liable for any direct or indirect, incidental or consequential damages, losses or expenses in connection with, or by reason of the suitability and use of or otherwise, any product or system for any purpose. Implied warranties of merchantability or fitness for any particular purpose, are specifically excluded. All Sayfa Group products must be installed and used by competent personnel trained in the selection, safe use and maintenance of fall arrest systems and equipment by a registered training organisation (RTO). Installation not in accordance with Sayfa Group requirements or the use of non Sayfa Group components will void all certification and warranties. Suitability of support structure and design layout of system is the responsibility of the installer and should be verified by a competent person trained by a Registered Training Organisation (RTO) in the selection, safe use and maintenance of fall arrest systems and equipment or approved by a structural engineer to ensure conformance. Sayfa Group maintains a policy of continuous improvement and development, and therefore reserves the right to modify, amend or otherwise alter product and system designs and specifications, models and part numbers, colours and pricing etc without prior notice. Errors and omissions are excepted, and Sayfa Group accepts no liability for incorrect information, errors or omissions.

1029 MOUNTAIN HWY  
BORONIA VIC 3155  
AUSTRALIA

T 1300 301 755  
F 1300 881 092  
E SALES@SAYFA.COM.AU

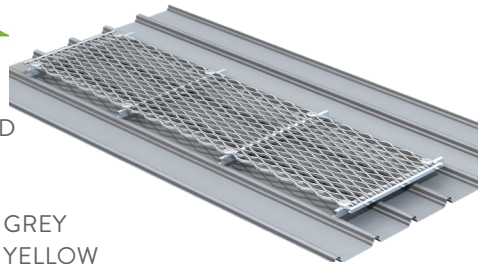
**CERTIFICATION**  
PRODUCT COMPLIANCE



# WALKWAYS

**pace**600.

**ON-TRAK**



- GW8: PACE600 ALUMINUM WALKWAY ONLY
- GW9: PACE600 ALUMINUM WALKWAY, LEVELED
- GW10: ON-TRAK FIBRE WALKWAY, GREY
- GW11: ON-TRAK FIBRE WALKWAY, YELLOW
- GW12: ON-TRAK FIBRE WALKWAY ON BATTENS, GREY
- GW13: ON-TRAK FIBRE WALKWAY ON BATTENS, YELLOW

Sayfa Group warrants that for a period of 10 years from date of purchase, that the product is free from all defects in materials or fabrication under normal use.

This warranty only applies to defects which have arisen solely from faulty materials or fabrication and does not apply to other defects including, without limitation, the following:- Incorrect installation, accidental damage, abuse, misuse, maltreatment, abnormal stress or strain, harsh or adverse treatment, neglect, corrosive or harsh environments and excessive use.

Warranty claims must include all details and should be made to Sayfa Group within 14 days of the appearance of the defect. Under no circumstances do we accept any liability for consequential loss.

Sayfa Group requires this system be checked and re-certified at least every 12 months by a qualified height safety inspector in accordance with relevant Australian Standards and manufacturers guidelines.

## WARRANTY CLAIMS

Should you have a warranty claim as a result of a defect the following procedure must be followed:

Identify the following information:

- Details of location where this item is installed.
- The product/system name and code number.
- The date of purchase/installation.
- Installation company details.
- The installation identification number.
- A description of the defect/warranty claim.
- Evidence of correct periodical maintenance

Forward the above information to [sales@sayfa.com.au](mailto:sales@sayfa.com.au) or contact technical helpline, 1300 301 755.



## TERMS & CONDITIONS

- All warranty claims must be made in writing within 14 days of the appearance of the defect.
- Incorrect installation, incorrect layout design or work done by a non accredited Sayfa Group installer will void all warranty rights.
- Systems that have been installed using non proprietary equipment will void all warranties.
- System roof/cladding penetration seals are not covered in this warranty.
- Systems/components that have not been maintained in accordance with manufacturer's and legislative requirements will void warranty.
- Systems used by incompetent persons or use with non compatible accessories ie. harness gear, lanyards, travelers, fall arrestors etc. will void warranty.
- Systems/components used for purposes other than their intended use will void warranty.
- General wear and tear is expected and will depend on the frequency of use and is not covered by the manufacturer's warranty.

## DISCLAIMER

All product specifications and technical descriptions, recommendations and other information provided, are given as general guidance and advice, and are to be read in conjunction with Sayfa Group installation instructions and any other data available and applicable to each particular standard product or system. Use of such data is however the user's sole responsibility, taking into account the intended application and actual conditions existing on the particular worksite. Consequent selection of the right product for any particular use, remains the user's ultimate responsibility. Sayfa Group is therefore not obligated or liable for any direct or indirect, incidental or consequential damages, losses or expenses in connection with, or by reason of the suitability and use of or otherwise, any product or system for any purpose. Implied warranties of merchantability or fitness for any particular purpose, are specifically excluded. All Sayfa Group products must be installed and used by competent personnel trained in the selection, safe use and maintenance of fall arrest systems and equipment by a registered training organisation (RTO). Installation not in accordance with Sayfa Group requirements or the use of non Sayfa Group components will void all certification and warranties. Suitability of support structure and design layout of system is the responsibility of the installer and should be verified by a competent person trained by a Registered Training Organisation (RTO) in the selection, safe use and maintenance of fall arrest systems and equipment or approved by a structural engineer to ensure conformance. Sayfa Group maintains a policy of continuous improvement and development, and therefore reserves the right to modify, amend or otherwise alter product and system designs and specifications, models and part numbers, colours and pricing etc without prior notice. Errors and omissions are excepted, and Sayfa Group accepts no liability for incorrect information, errors or omissions.

1029 MOUNTAIN HWY  
BORONIA VIC 3155  
AUSTRALIA

T 1300 301 755  
F 1300 881 092  
E [SALES@SAYFA.COM.AU](mailto:SALES@SAYFA.COM.AU)

**WARRANTY - 10 YEARS**  
TERMS & CONDITIONS

