

MATERIALS HOIST

The Edge materials hoist is a low maintenance telescopic jib, made from high quality durable steel. The Edge materials hoist is the perfect solution for anyone that has to load, unload or handle heavy loads safely.

- 360° manual radial slew
- Rugged structure with low maintenance powder coated finish
- Folds down when not in use
- Bearing & pre-lubricated bushes fitted to make slewing easier
- Allows accurate placement of loads, even in confined spaces
- Supplied with manual winch



TECHNICAL SPECIFICATION

SYSTEM
CODE

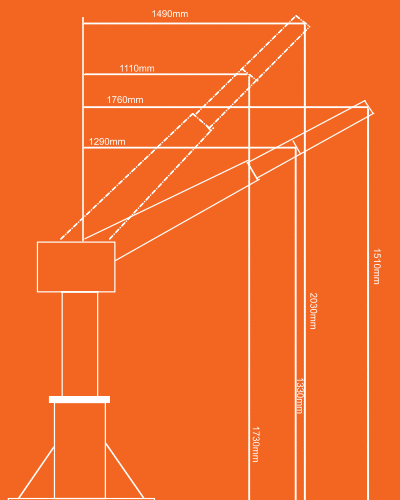
EDGE MATERIALS HOIST
HR 051

TECHNICAL DATA

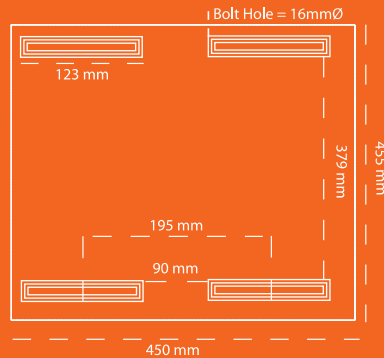
MATERIALS

- Powder coated steel construction

DIMENSIONS



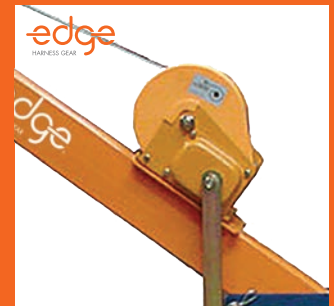
Base Plate



WORKING LOAD LIMIT

Max 100kg W.L.L.

Support structure integrity, suitability and fixing method to be assessed and determined by a competent person prior to installation.



MATERIALS HOIST WINCH



MATERIALS HOIST BASE PLATE & TURRET

COMPLIANCE

Edge materials hoist are designed and manufactured generally in accordance with requirements of Australian Standards and relevant statutory OHS Codes of Practice/Guidelines.

TESTING

Testing and performance based on max 100kg W.L.L.

PRODUCT WARRANTY

1 year from date of purchase subject to correct installation, use and maintenance in accordance with manufacturer's specifications and recommendations.

INSPECTION AND MAINTENANCE

Visual inspection for any damage or loose fixings must be done periodically and prior to use. No certified maintenance required. Basic wear/ tear preventative maintenance is recommended, as per manufacturer's specifications and recommendations. (Refer instruction manual.)

IMPORTANT NOTE

Edge materials hoist NOT to be used for lifting or lowering person/s. Failure to supply and/or install proprietary product in accordance with above standards and codes, specifications and instructions voids complete system certification and/or warranty.

DISCLAIMER

All product specifications and technical descriptions, recommendations and other information provided, are given as general guidance and advice, and are to be read in conjunction with Sayfa Group installation instructions and any other data available and applicable to each particular standard product or system. Use of such data is however the user's sole responsibility, taking into account the intended application and actual conditions existing on the particular worksite. Consequent selection of the right product for any particular use, remains the user's ultimate responsibility. Sayfa Group is therefore not obligated or liable for any direct or indirect, incidental or consequential damages, losses or expenses in connection with, or by reason of the suitability and use of or otherwise, any product or system for any purpose. Implied warranties of merchantability or fitness for any particular purpose, are specifically excluded.

All Sayfa Group products must be installed and used by competent personnel trained in the selection, safe use and maintenance of fall arrest systems and equipment by a registered training organisation (RTO). Installation not in accordance with Sayfa Group requirements or the use of non Sayfa Group components will void all certification and warranties.

Suitability of support structure and design layout of system is the responsibility of the installer and should be verified by a structural engineer or a site specific live load test done to ensure conformance. Maintenance and usage of the system in accordance with Sayfa Group requirements is the responsibility of the owner or manager of the workplace.

Designed and manufactured by Sayfa Group. For all technical assistance contact Sayfa Group. SAYFAGROUP-4.9.2014



1029 MOUNTAIN HWY
BORONIA VIC 3155
AUSTRALIA

T 1300 301755
F 1300 881092
E INFO@SAYFA.COM.AU

FOR MORE INFORMATION
VISIT SAYFA.COM.AU

