

**pace**600™

ALUMINIUM WALKWAY

**SAYFA**  
GROUP

1300 301 755  
SAYFA.COM.AU

**PRODUCT CODE**  
GW8 Flat Walkway  
GW9 Levelled Walkway

**DESCRIPTION**  
PACE600 ALUMINIUM  
WALKWAY



---

## ALUMINIUM WALKWAY AND ROOF DECK PROTECTION SYSTEM PROVIDING SAFE ACCESS FOR WORKERS

---

- Lightweight, strong aluminium components ensure simple installation
- Safe access to roof mounted plant and equipment via designated walkways
- Multidirectional, non slip surface tested to meet Australian Standard's slip rating
- Non-corrosive materials provide maintenance free protection

**PRODUCT BROCHURE**



# TECHNICAL SPECIFICATION

## CODE DESCRIPTION SPECIFICATION SUMMARY

GW8 (Flat walkway), GW9 (Levelled walkway)  
**ALUMINIUM WALKWAY**  
 PACE600 Aluminium Walkway installed on battens using bulb type self sealing rivets and EPDM dissimilar metal seal. System design, supply, layout, installation and certification by a SAYFA approved installer, as per the manufacturer's installation instructions and current standards.

## TECHNICAL DATA

### MATERIALS

- Walkway - mill finish, expanded aluminium grating
- Roof battens - mill finish profiled aluminium

### DIMENSIONS

- Walkway grating length - 3000mm/6000mm
- Walkway grating width - 600mm
- Walkway grating thickness - 13mm
- Support batten - 700mm(L) x 40mm(H)

### WEIGHT

- 4.5 kg per linear metre (6.4kg per m<sup>2</sup>)
- 25kg per 6m length

### FIXINGS

- Walkway to batten - 12-14 x 35 stainless self drill screw
- Batten to roof deck - 5mm construction grade bulb type rivet
- EPDM seal / dissimilar metal barrier
- Note: Maximum batten increments - 670mm (*refer instruction manual*)

### WORKING LOAD LIMIT

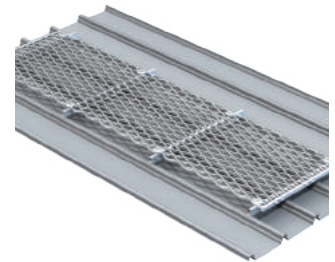
Span (mm)	Max Load Capacity	Max Deflection
500mm	4.8 kPa	2.5mm
670mm	2.5 kPa	3.2mm
700mm	1.8 kPa	3.5mm



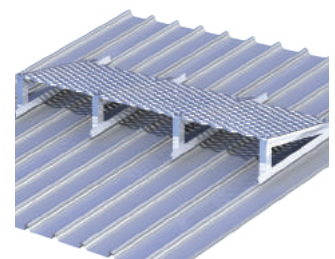
GW4 WALKWAY, WITH GUARDRAIL OPTION



GW5 WALKWAY WITH GUARDRAIL, LEVELLED OPTION



GW8 PACE ALUMINIUM WALKWAY, FLAT



GW9 PACE ALUMINIUM WALKWAY, LEVELLED

## COMPLIANCE

PACE600 Walkway System is designed to comply with Australian Standard AS 1657:2018 and relevant statutory WHS Codes of Practice/Guidelines.

## TESTING

Testing and performance based on requirements of Australian Standard AS 1657:2018. Slip resistance - tested to AS4586 (Classification - R11).

## PRODUCT WARRANTY

10 years from date of purchase subject to correct installation, use and maintenance in accordance with manufacturer's specifications and recommendations. (*Refer instruction manual.*)

## INSPECTION AND MAINTENANCE

Visual inspection for any damage or loose fixings must be done periodically and prior to use. Basic wear and tear preventative maintenance is recommended, as per manufacturer's specifications and recommendations.

## IMPORTANT NOTE

Failure to supply and/or install proprietary product in accordance with above standards and codes, specifications and instructions voids complete system certification and/or warranty.

## PRODUCT DISCLAIMER LINK

[HTTPS://SAYFA.COM.AU/WP-CONTENT/UPLOADS/2019/07/PRODUCT-DISCLAIMER\\_02.07.2019\\_SS.PDF](https://sayfa.com.au/wp-content/uploads/2019/07/PRODUCT-DISCLAIMER_02.07.2019_SS.PDF)

*Designed and manufactured by Sayfa Group. For all technical assistance contact Sayfa Group. SAYFAGROUP 09.07.2021*

