

Suggested Connection Details when maintenance to fasteners is not possible after initial installation.

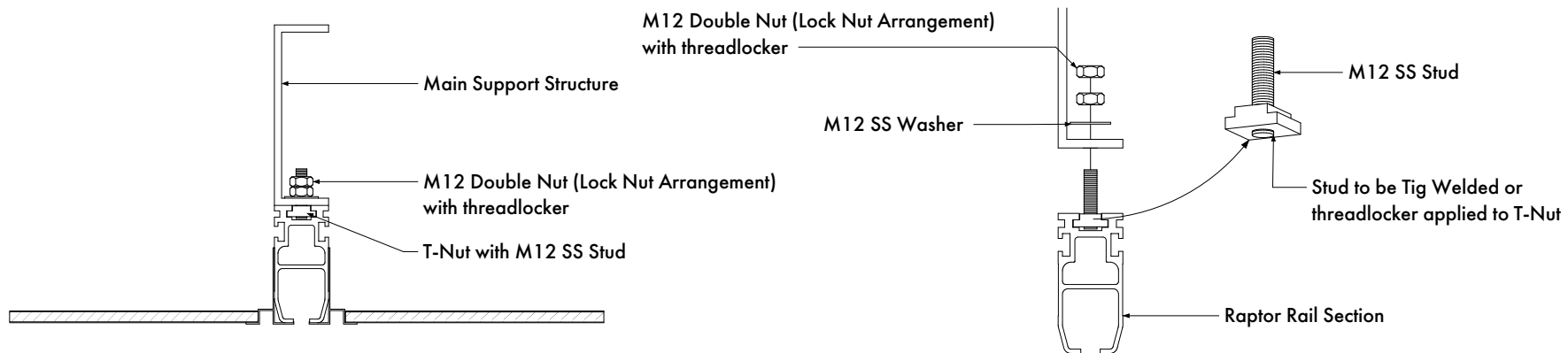
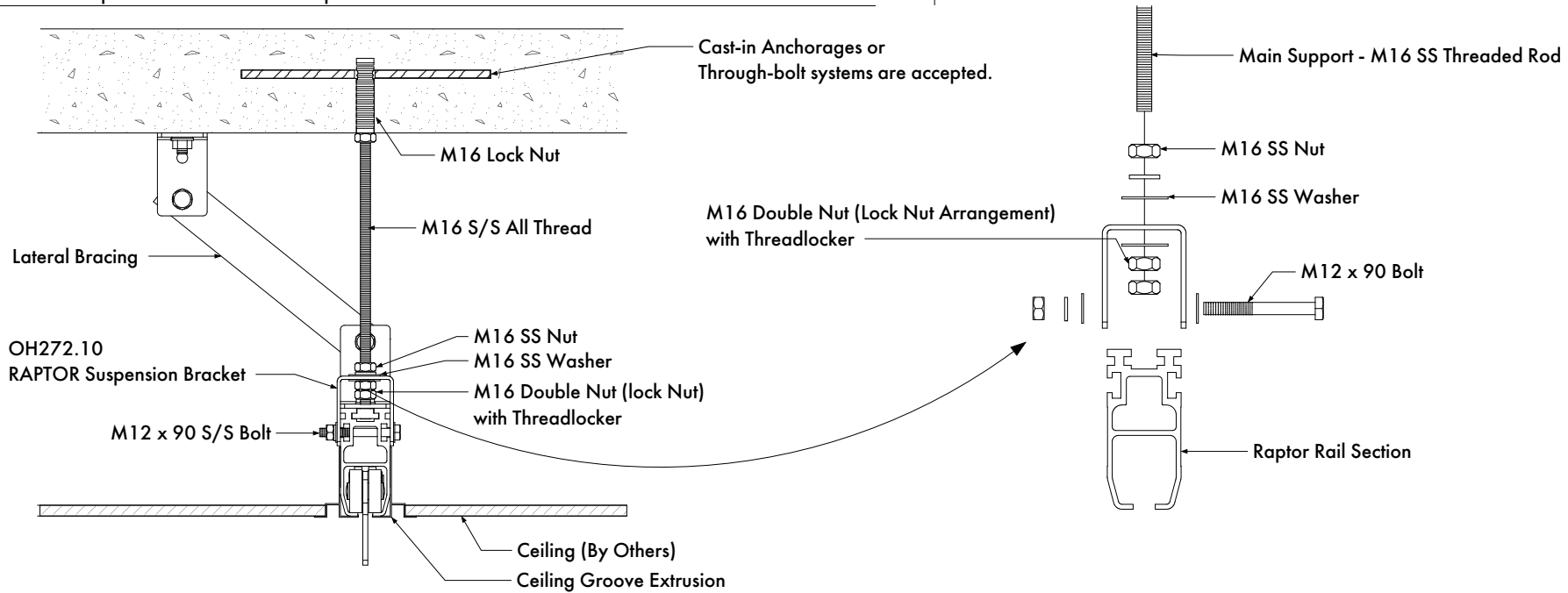
NOTE: Min Requirements

- All Fasteners to have threadlocker applied (Loctite 277 Recommended)
- Photographic evidence of all connection details must be taken and included in opps manual for future reference.
- Supports to be MAX 2000mm apart
- 600 x 600 Inspection Hatches should be provided.

Suggested Torque Settings for Bolts

M16 - 80Nm

M12 - 30Nm



1029 MOUNTAIN HWY BORONIA VIC 3155
 T +61 1300 301 755 F +61 1300 881 092
 E sales@sayfa.com.au E sayfa.com.au

THIS PROPERTY REMAINS THE PROPERTY OF SAYFA GROUP AND MAY NOT BE CHANGED WITHOUT WRITTEN PERMISSION FOR FURTHER INFORMATION REFER TO OUR WEBSITE AT sayfa.com.au

DESCRIPTION
 RAPTOR CONNECTIONS
 CONCEALED FASTENER INSTALL DETAILS

DRG No.	DATE
7665	16/08/2018
Code	REV
oh250	2

TECHNICAL DRAWING

