

X-PLORA[®]

PIGTAIL LATERAL RESTRAINT ANCHOR



PROPRIETARY LATERAL RESTRAINT FOR WORK POSITIONING WITH ROPE ACCESS SYSTEMS

- Multiple structure connection
- Stainless steel coating
- 2 length options, 80mm and 120mm
- Robust 16mm diameter construction

PRODUCT BROCHURE



TECHNICAL SPECIFICATION

CODE	AP165, AP166, AP167
DESCRIPTION	XPLORA PIGTAIL LATERAL RESTRAINT ANCHOR
SPECIFICATION SUMMARY	The XPLORA Lateral Restraint Anchor by SAYFA GROUP spaced every 20 - 30m vertically per drop. System design, supply, layout, installation and certification by a SAYFA approved installer, as per the manufacturer's instructions and current standards.

TECHNICAL DATA	RATING
	- Lateral restraint - 2kN*
	*2kN minimum load as per Australian Standards and anchor purpose must be considered to define actual load

MATERIALS
- Stainless steel finish

DIMENSIONS

CODE	DESCRIPTION	LENGTHS
AP165.080	CHEMICAL/GLUE IN	80mm
AP165.120	CHEMICAL/GLUE IN	120mm
AP166.080	THROUGH BOLT	80mm
AP166.120	THROUGH BOLT	120mm
AP167.080	RETRO FIT	80mm
AP167.120	RETRO FIT	120mm



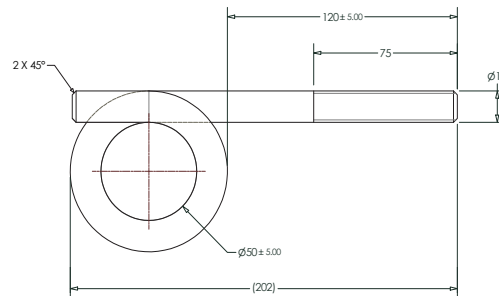
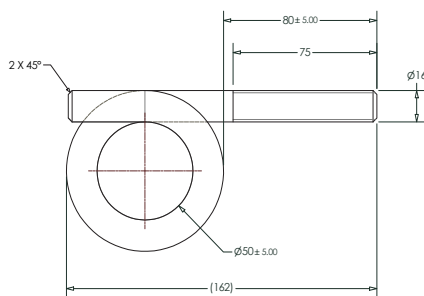
AP165 CHEMICAL FIX



AP166 THROUGH BOLT



AP167 RETRO FIT



COMPLIANCE	The XPLORA Lateral Restraint Anchor range is designed and manufactured in accordance with requirements of AS/NZS ISO 22846.
-------------------	---

TESTING	Testing and performance based on AS/NZS1891.4:2009. 2kN is a minimum load as per Australian Standards and anchor purpose must be considered to define actual load.
----------------	--

PRODUCT WARRANTY	10 years from date of purchase subject to correct installation, use and maintenance in accordance with manufacturer's specifications and recommendations.
-------------------------	---

INSPECTION AND MAINTENANCE	The XPLORA Lateral Restraint Anchor system needs to be checked and recertified by a competent height safety inspector every 12 months for non corrosive environments or 6 monthly for corrosive or harsh environments. (To be determined by competent person depending on the severity of surrounding conditions.)
-----------------------------------	--

IMPORTANT NOTE	The XPLORA Lateral Restraint Anchor is designed for work positioning for rope access systems only and cannot be loaded to greater than 2kN.
-----------------------	---

PRODUCT DISCLAIMER LINK	SAYFA.COM.AU/WP-CONTENT/UPLOADS/2019/07/PRODUCT-DISCLAIMER_02.07.2019_SS.PDF
--------------------------------	--

Designed and manufactured by Sayfa Group. For all technical assistance contact Sayfa Group. SAYFAGROUP 07.02.2022



1029 MOUNTAIN HWY
BORONIA VIC 3155
AUSTRALIA

T 1300 301 755
F 1300 881 092
E SALES@SAYFA.COM.AU

FOR MORE INFORMATION
VISIT SAYFA.COM.AU

